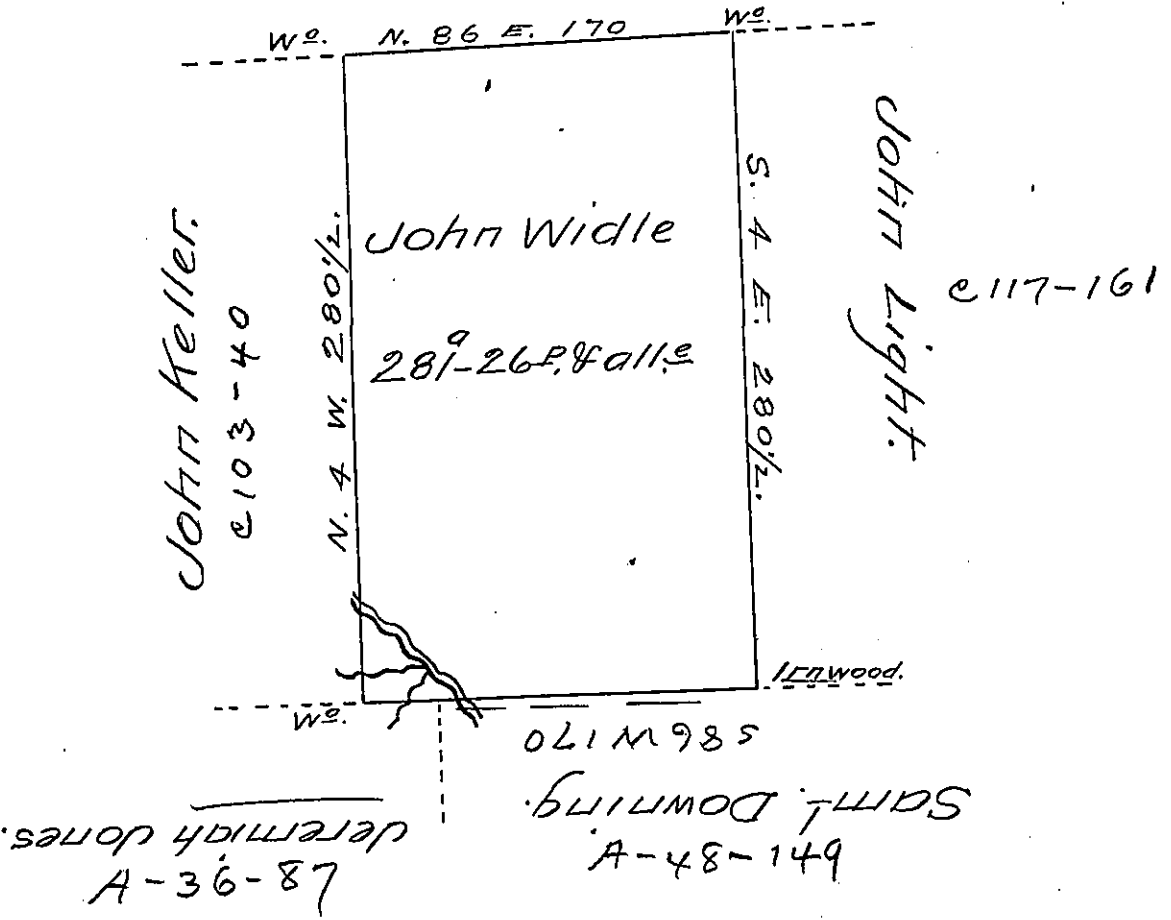


Sold Lands.



A Draught of a tract of Land Situate on Waters of Bull Creek in Butler County Containing Two hundred and Eighty one acres 26⁹/₁₆ and allowance of six ⁹/₁₆ Ct. for Roads &c. Surveyed May 26th 1807 in Pursuance of a Warrant Granted to John Widle for 280 acres dated March 4th 1793.

Jas. Irvine D.S.

To Saml. Cochran Esq. S.G.

IN TESTIMONY that the above is a copy of the original remaining on file in the Department of Internal Affairs of Pennsylvania, made conformably to an Act of Assembly approved the 16th day of February 1833, I have hereunto set my hand and caused the Seal of said Department to be affixed at Harrisburg, this eighth day of May 1907.

Alena Hovick
Secretary of Internal Affairs.